

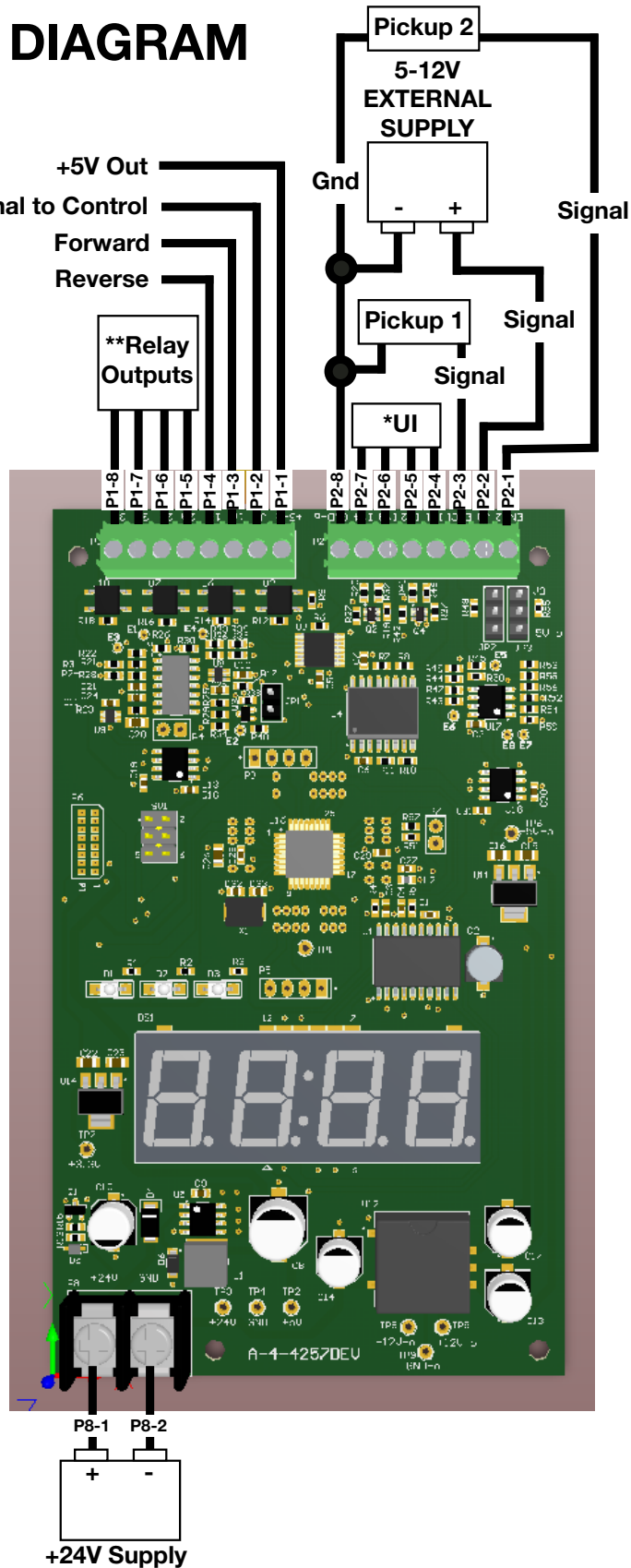
# DP5 Quick Start Guide

## DP5 HOOK-UP DIAGRAM

**\*User Inputs  
(5V Max)**

**\*\*Relay Outputs  
(Load Voltage 0-60V)  
(Load Current 100mA)**

Terminal Position	Function
P1-1	+5V 0
P1-2	VW
P1-3	OUT1A
P1-4	OUT1B
P1-5	OUT2A
P1-6	OUT2B
P1-7	OUT3A
P1-8	OUT3B
P2-1	ENC2
P2-2	VO
P2-3	ENC1
P2-4	IN1
P2-5	IN2
P2-6	IN3
P2-7	IN4
P2-8	GND
P8-1	+V24
P8-2	GND



## Setup Procedure

1. Connect the 153D-200C to the DP5 per the wiring diagram and set jumpers JP2 and JP3 for the intended application. Refer to the Encoder Interface section in the User Parameters document for details.
2. Connect jumpers P4 and P7 together as shown in the diagram below to be able to run the auto-tune. Be sure to match P4-1 to P7-1 and P4-2 to P7-2 for proper functionality.
3. Power on the DP5 and the 153. The display should read 0000. Press and hold the enter button to access the parameter settings where the control will wait for a passcode. Use the passcode 5678 to change parameter settings. Press up on the drive until the first digit reads 5 and press enter. Repeat for the remaining digits. If the wrong code is entered, the display will read 'err' and exit programming mode.
4. While in programming mode, go to parameter 24 to run the auto-tune and configure the wiper output. The default value is 0050 for 5V. For the 150 series, the value should be set at 10V. Adjust the value to 0100 and press enter so the DP5 can run auto-tune. The unit will read 'tune' and then 'done' once the unit completes the auto-tune. Press enter to exit the programming menu and then power cycle the control for the changes to take effect.
5. Adjust additional parameters as necessary for the intended application.

## Connection Diagram

