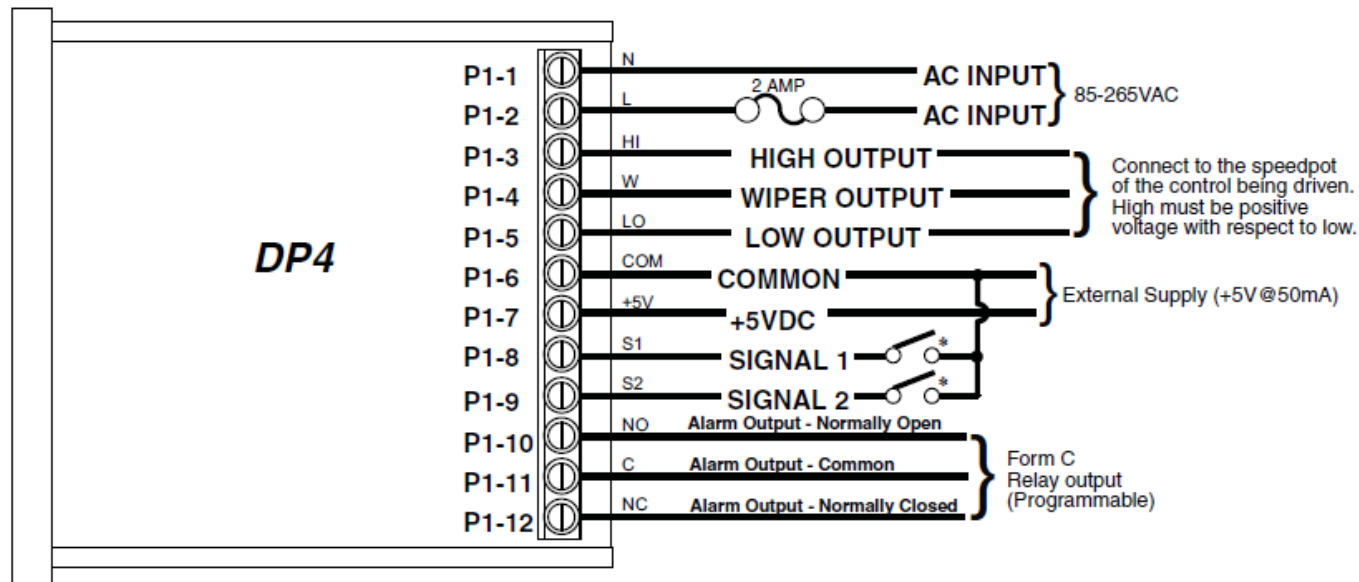


Application Note – DP4 Series Multiple Speed Operation

Requirement: Operate the DP4 Digital Pot at two or three preset speeds

Solution: Use the S1 and / or S2 inputs in Output Setpoint mode – pushbutton, limit switch, PLC, counter / totalizer contact may be used to manually or automatically change set speed. A third preset speed may be achieved by powering off DP4 and using Power Up Value as third set speed.

Valid for Models: DP4



Parameter Settings: Parameters 30&35 = 3 or 4; parameters 31 & 36 as needed. Optional for third set speed: Parameter 18 = 2 and parameter 19 as needed.