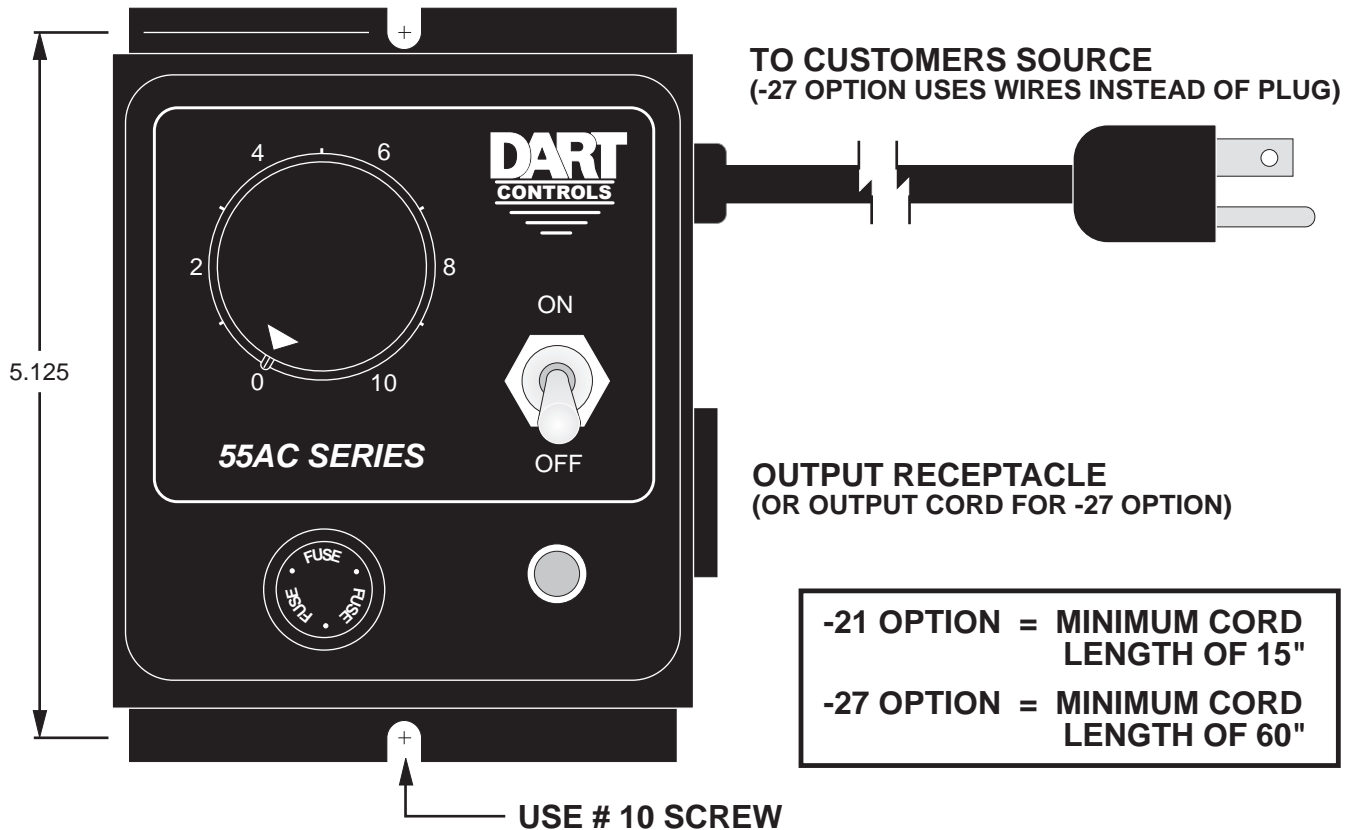
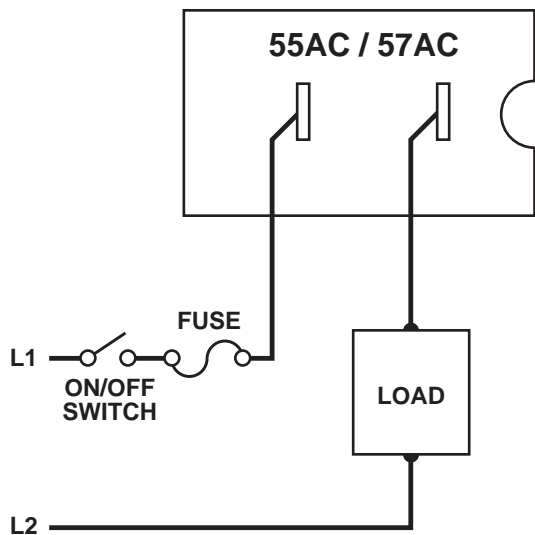


55AC SERIES ENCLOSED MODELS

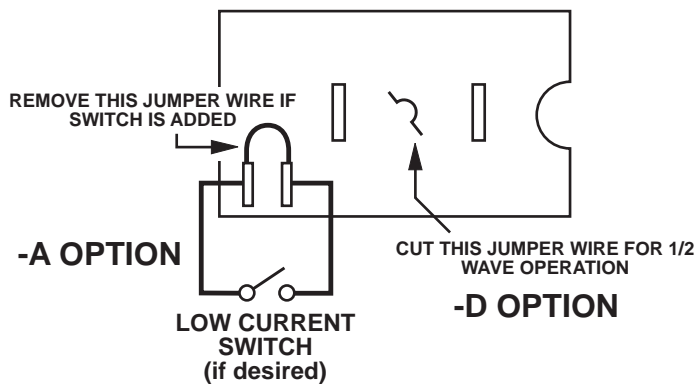


-21 OPTION = MINIMUM CORD LENGTH OF 15"
 -27 OPTION = MINIMUM CORD LENGTH OF 60"

55AC SERIES CHASSIS MODELS



NOTE: FOR 55AC-A, USE HOOK-UP DIAGRAM TO LEFT IN CONJUNCTION WITH THE INSTRUCTIONS SHOWN BELOW.

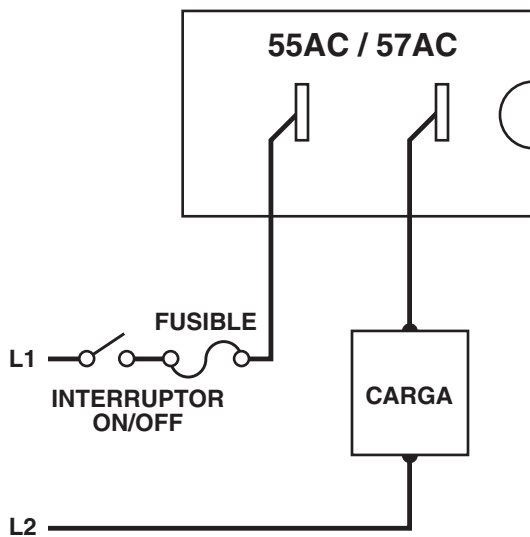


NOTE:
 The 55 Series is designed to work with shaded pole, permanent split capacitor, permanent split-phase, universal motors or any resistive load. It is not designed for capacitor start motors.

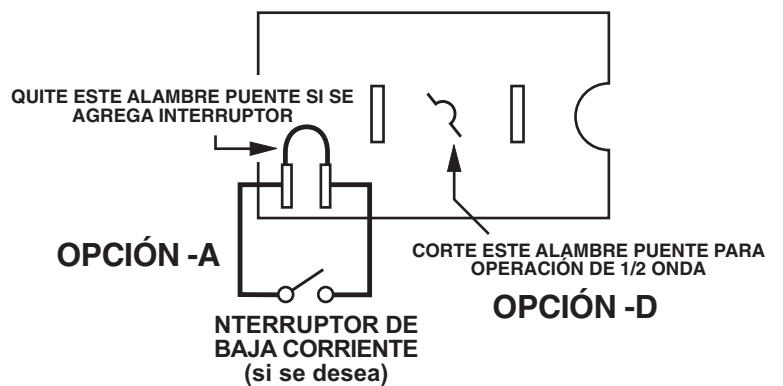
MODELOS CERRADOS SERIE 55AC



MODELOS CON CHASIS SERIE 55AC

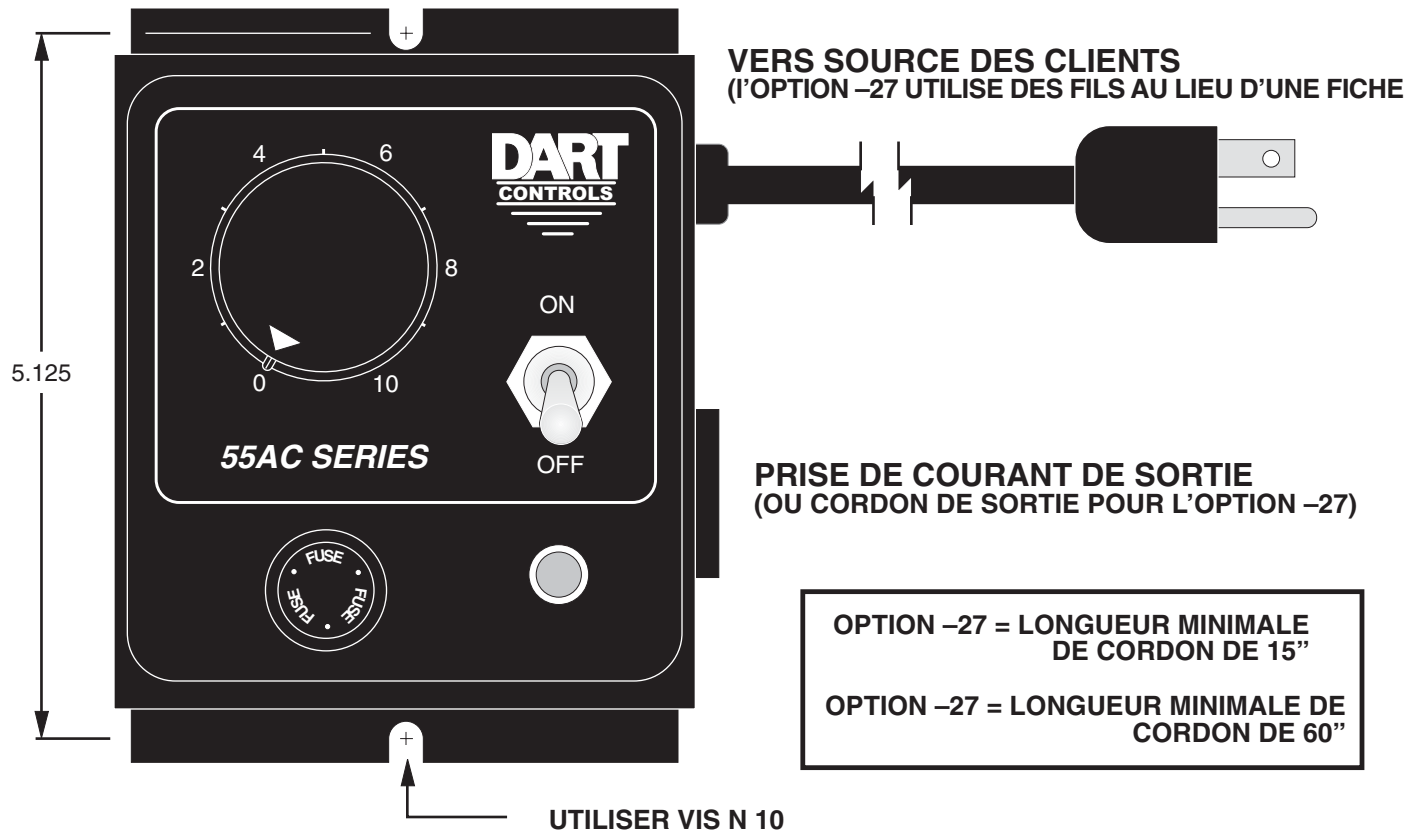


NOTA: PARA 55AC-A, USE DIAGRAMA DE CONEXIÓN A LA IZQUIERDA JUNTO CON LAS INSTRUCCIONES MOSTRADAS ABAJO

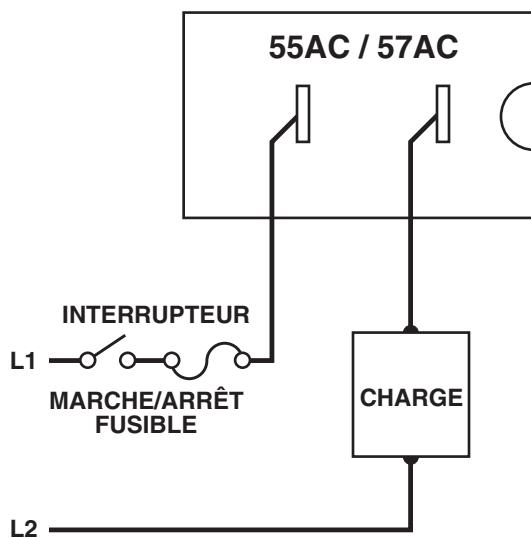


La Series 55 está diseñada para trabajar con motores universales, de polos protegidos, con capacitor y fase divididos permanentemente o cualquier carga resistiva. No está diseñado para motores que arranquen con capacitor.

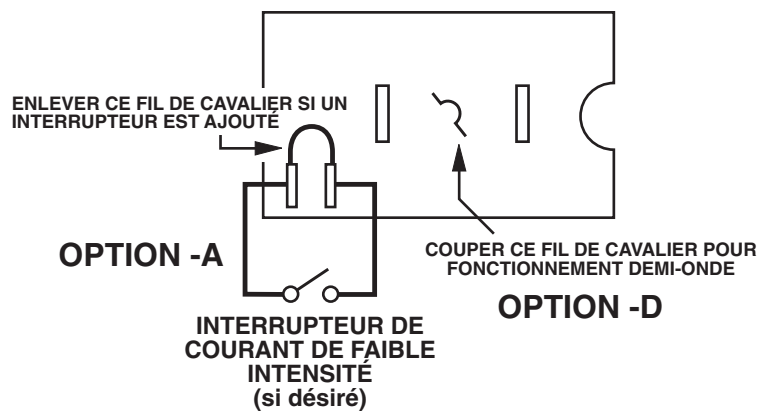
MODÈLES PROTÉGÉS SÉRIE 55AC



MODÈLES À CHÂSSIS SÉRIE 55AC



NOTE : POUR 55AC-A, UTILISER LE SCHÉMA DE RACCORDEMENT À GAUCHE CONJOINTEMENT AVEC LES INSTRUCTIONS INDICUÉES CI-DESSOUS.



Le Série 55 est conçu pour fonctionner avec des moteurs universels à bague de déphasage, à condensateur permanent et à enroulement auxiliaire permanent ou avec n'importe quelle charge résistive. Il n'est pas conçu pour des moteurs à condensateur permanent.

REPAIR PROCEDURE

In the event that a Product manufactured by Dart Controls Incorporated (DCI) is in need of repair service, it should be shipped, freight paid, to: Dart Controls, Inc., 5000 W. 106th Street, Zionsville, IN. 46077, ATTN: Repair Department.

Those orders received from anyone without an existing account with DCI will need to specify if they will be paying COD or Credit Card (Master Card or Visa). This information is required before work can begin. If you have an account with Dart your order will be processed according to the terms listed on your account.

Completed repairs are returned with a Repair Report that states the problem with the control and the possible cause. Repair orders are returned via UPS Ground unless other arrangements are made. If you have further questions regarding repair procedures, contact your Dart Controls, Inc. at 317-733-2133 Ext.460.

YOUR MOTION SYSTEMS SOLUTION PROVIDER



125D SERIES
AC INPUT - VARIABLE DC OUTPUT
1/50 HP through 1.0 HP



250G SERIES
AC INPUT - VARIABLE DC OUTPUT
1/50 HP through 2.0 HP



65 SERIES
DC INPUT - VARIABLE DC OUTPUT
CURRENT RATINGS OF 20, 40, AND
60 AMPS



700/COMMUTROL SERIES
DC BRUSHLESS
5 & 20 Amp for
12,24,& 36VDC Inputs



MDP SERIES
PROGRAMMABLE
CLOSED LOOP DC
SPEED CONTROL



DM SERIES
FIELD PROGRAMMABLE
DIGITAL TACHOMETER

Dart Controls, Inc. is a designer, manufacturer, and marketer of analog and digital electronic variable speed drives, controls, and accessories for AC, DC, and DC brushless motor applications.

Shown above is just a sampling of the expanded line of Dart controls that feature the latest in electronic technology and engineering. Products are manufactured in the U.S.A. at our Zionsville (Indianapolis,

Indiana) production and headquarters facility - with over 2,000,000 variable speed units in the field.

In addition to the standard off-the-shelf products, you can select from a wide variety of options to customize controls for your specific application. For further information and application assistance, contact your local Dart sales representative, stocking distributor, or Dart Controls, Inc.

Dart Controls, Inc.

Manufacturer of high quality DC and AC motor speed controls and accessories since 1963.

P.O. Box 10
5000 W. 106th Street
Zionsville, Indiana 46077
Phone: (317) 733-2133
Fax: (317) 873-1105