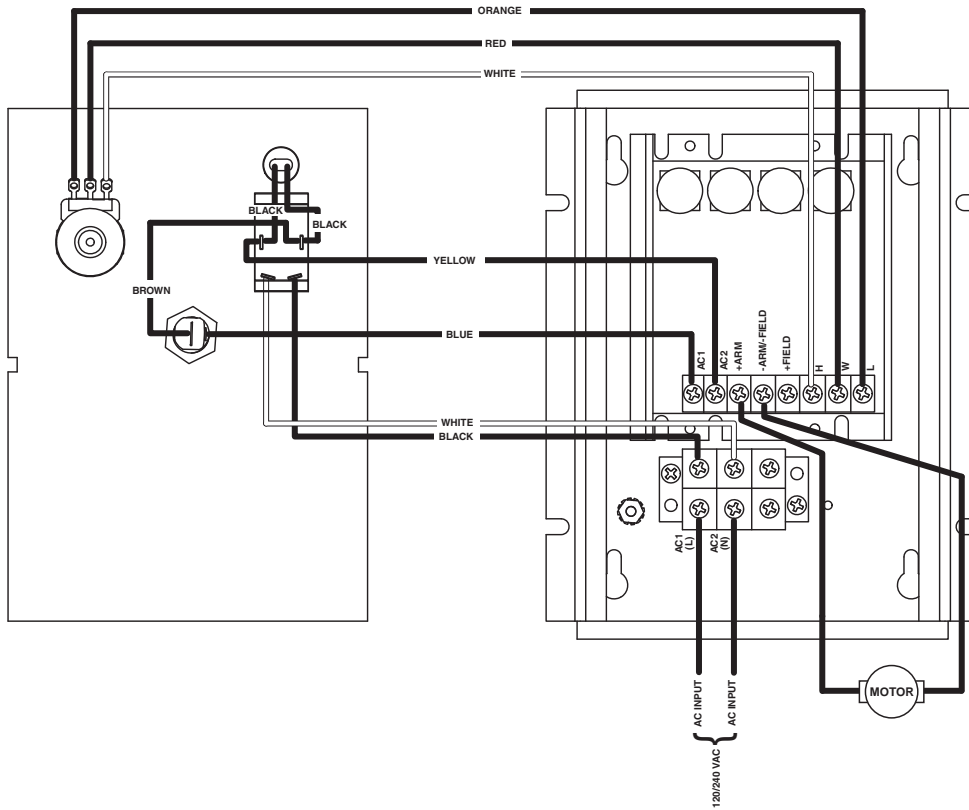
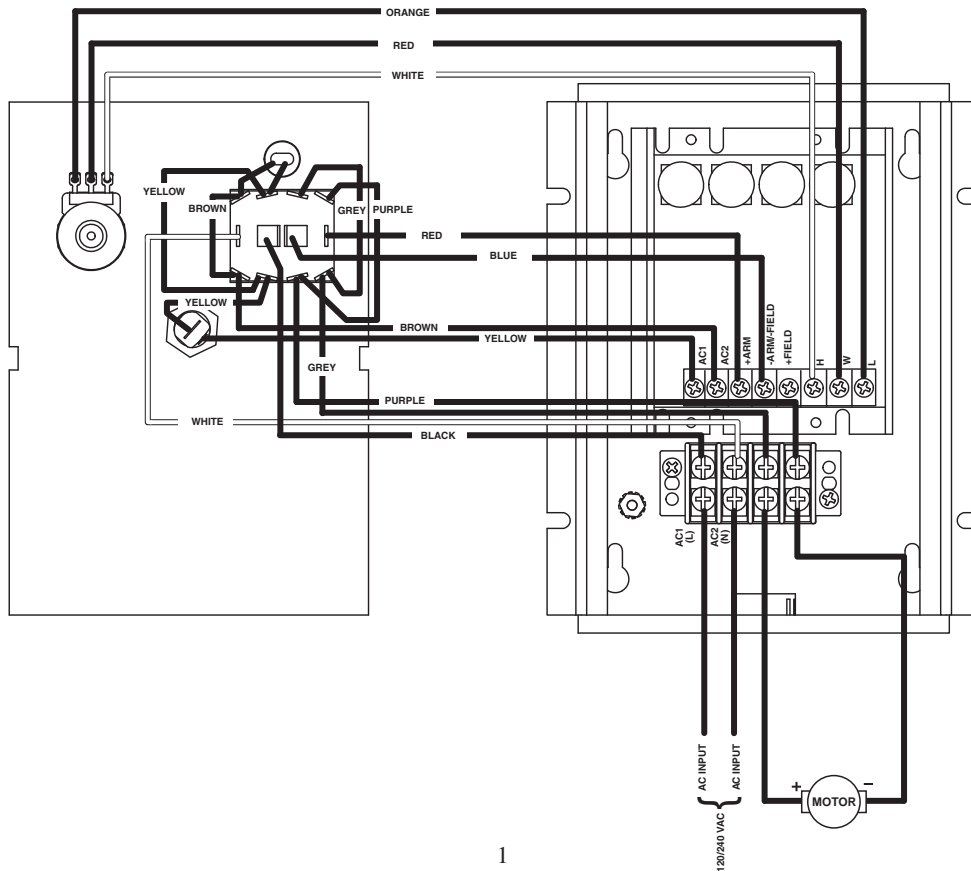


125DVE ADDER SHEET

125DVE Standard Hook-Up



125DVE-29 Reversing Hook-Up



125DVE SPECIFICATIONS

AC input voltage $\pm 10\%$ of rated line voltage
 Acceleration 0.5 seconds (standard 125D)
 Amps - DC output 150 mA to 5.5 ADC
 Controller overload capacity 200% for one minute
 Current limit trimpot range 1 to 15 ADC (125DVE)
 Deceleration 0.5 seconds (standard)
 Dimensions and weights:

	WIDTH	LENGTH	DEPTH	WEIGHT
ENGLISH	6.016"	7.630"	6.845"	2.61 lb.
METRIC	153mm	194mm	174mm	1.18 kg.

Drive service factor 1.0
 Efficiency 85% typical
 Input frequency 50 or 60 Hertz
 Max. trimpot speed range 60% to 110% of base speed
 Min. trimpot speed range 0% to 30% of maximum speed
 Power devices isolated case tab
 Shunt field voltage 100VDC for 120VAC input; 200VDC for 240VAC input; 1 amp maximum
 Speed control via 5Kohms potentiometer or 0-10VDC isolated signal
 Speed range 50:1
 Speed regulation $\pm 1\%$ of base speed
 Temperature range -10° to 45° C. ambient (15° to 115° F.)
 Transient protection G-Mov
 Trigger opto-coupler
 Type ramp of accel/decel RC time constant (standard) Linear (optional)
 Enclosure type Nema 1