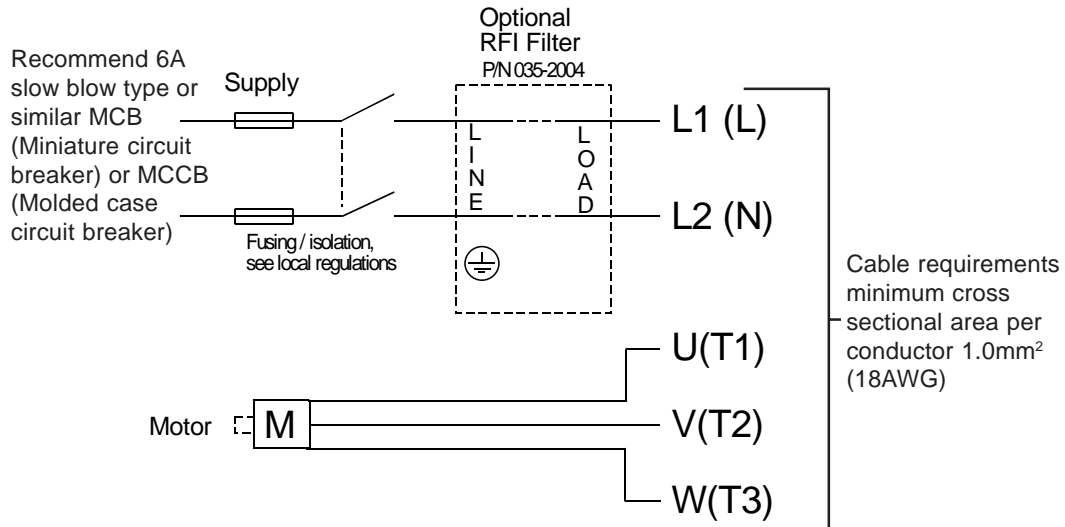


1000 Series Hook-Up Diagrams

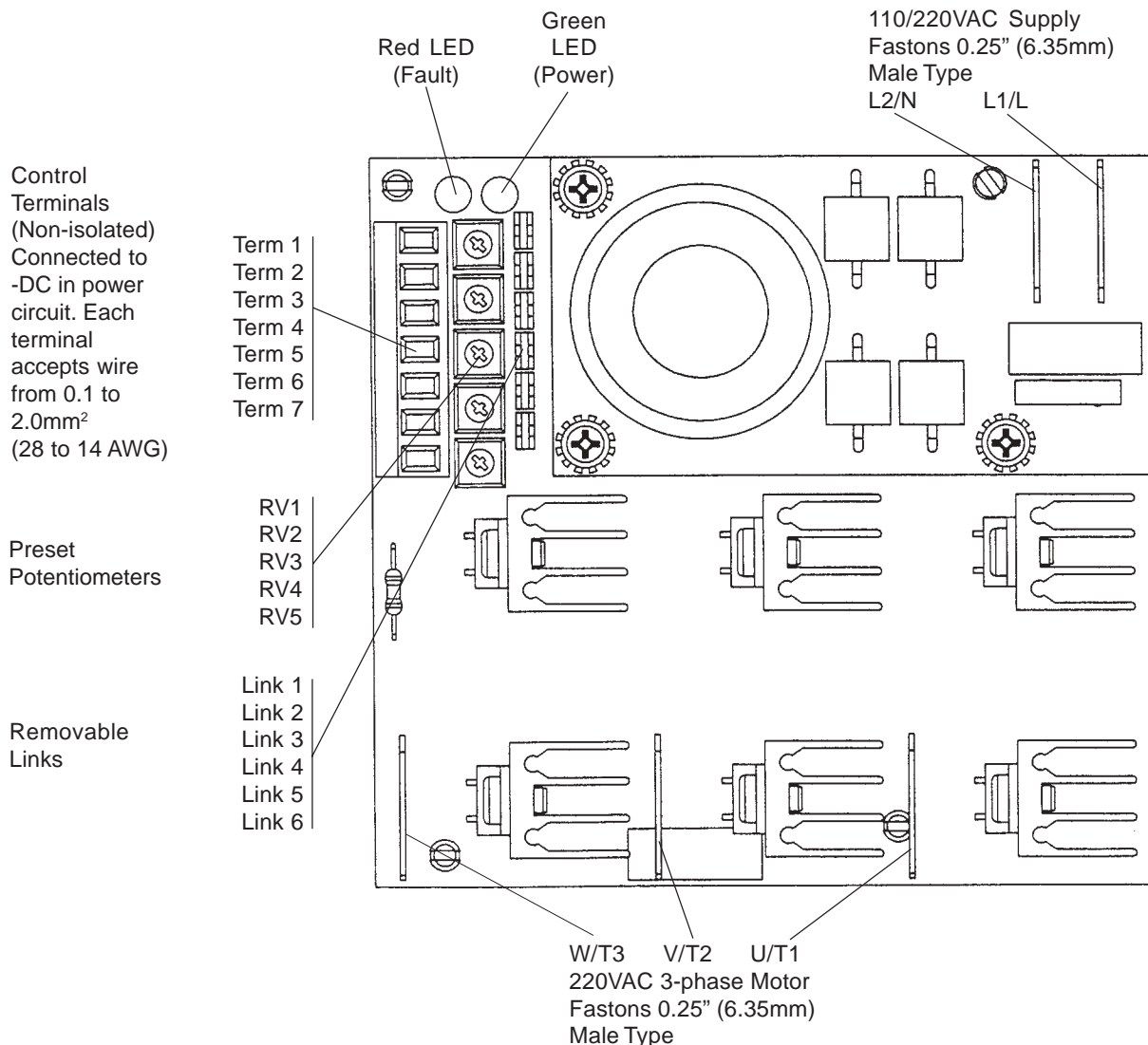
Power Connections



- L1, L2, U, V, W, need to be cables terminated by a 0.25" (6.35mm) female faston connector.
- Use of shielded/screened cable/conduit is recommended to reduce RFI.

Controls and Connections

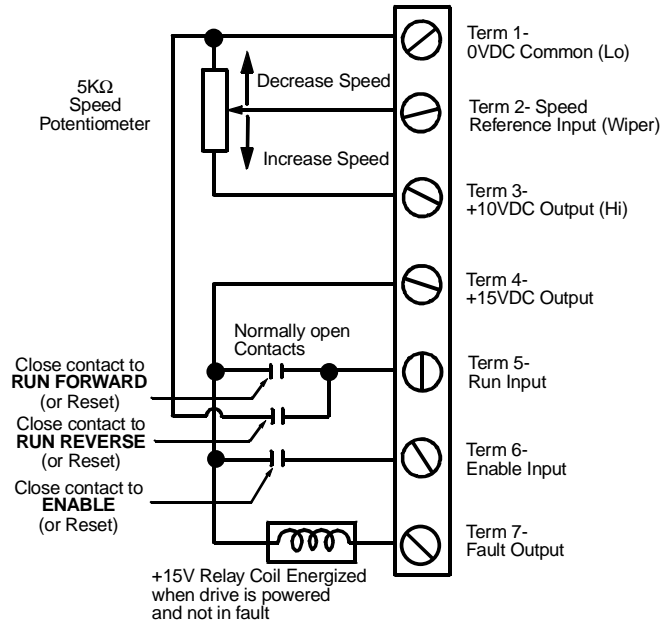
PLAN VIEW SHOWING POSITIONS OF CONTROL AND POWER CONNECTIONS



Controls Connections (NON ISOLATED)

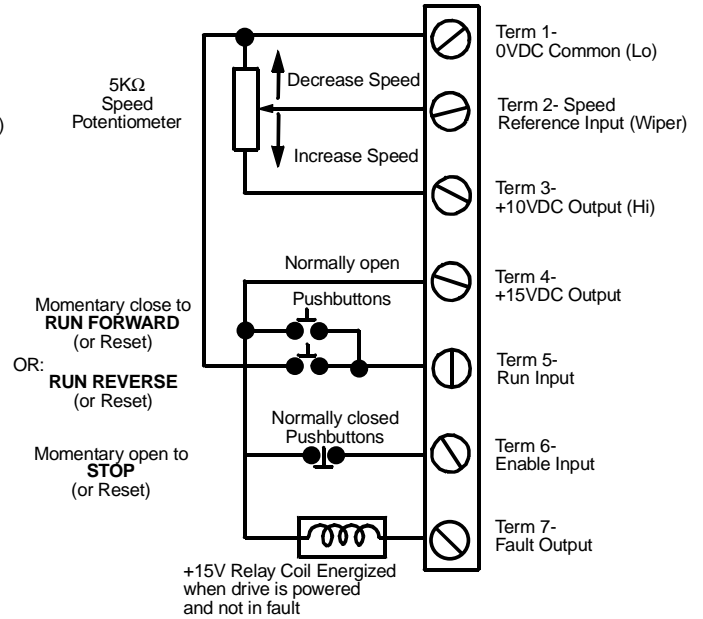
2-WIRE MODE (LINK 6 IN)

DRIVE



3-WIRE MODE (LINK 6 OUT)

DRIVE



- Caution: care must be taken to prevent shorting 15V supply to 0VDC.
- For all control cables recommend using shielded/screened 0.50 mm² (20AWG) cable.
- Do **NOT** connect Terminal 1, 0VDC Common, or any other control terminal, to earth/ground or any other external circuit or component which is not suitable for direct connection to the incoming supply lines.
- Shielded/screened cable must have suitable voltage rating from shield/screen to earth/ground potential (i.e. ≈240VAC)