

RUGGED • LIGHTWEIGHT • COST EFFICIENT • RELIABLE**Standard Features:**

- Rugged, lightweight aluminum enclosure provides NEMA 1 protection for the control
- Dual voltage 120/240@ 50/60Hz
- Adjustable HP settings
- Barrier terminal strip
- Full wave bridge power supply
- 1% speed regulation with armature feedback, 1/2% with tachometer feedback
- Adjustable minimum speed (0-30% of max)
- Adjustable maximum speed (60 to 100% of base)
- Adjustable IR compensation
- Adjustable current limit
- Line voltage compensation
- 50:1 speed range
- Overload capacity: 200% for one minute
- Transient voltage protection.
- Shunt field supply provided. (1 Amp max; 100V for 120 VAC; 200 V for 240 VAC input)
- Panel-mount fuse holder, in-line with AC input voltage, attached to front panel, 15A fuse included
- cULus recognized

**About the 125DVE Series:**

The 125DVE Series is a cost efficient, compact, reliable speed control in a NEMA 1 enclosure for PM, shunt wound, and Universal DC Motors up to 1 HP. The enclosure provides shielding from dust and light, and protection against accidental shock, as well as exceptional heat dissipation. Installation and field adjustments are facilitated by an easy access snap-on front panel (no screws), a barrier terminal strip, and large easily adjusted trim pots.

By incorporating the proven capabilities of the popular 125 Series base control in a rugged, lightweight, anodized aluminum enclosure, the 125DVE offers an ideal solution for your NEMA 1 DC motor speed control applications.

Typical Applications:

- Office Machines
- Conveyors
- Office packaging equipment
- Printers
- Process equipment
- Centrifuges
- Exercise equipment

Operating Conditions:**Temperature**

-10° to +45° C

AC Input Voltage

±10% Rated Line Voltage

Input Frequency

50/60 Hz

Dart Controls, Inc. is an ISO9001:2000 registered designer, manufacturer, and marketer of analog, and digital electronic variable speed drives, controls, and accessories for AC, DC, and DC brushless motor applications.

Dart Controls, Inc.

5000 West 106th Street, Zionsville, Indiana 46077 USA

317-873-5211 • Fax: 317-873-1105 • Email: sales@dartcontrols.com

www.dartcontrols.com

125DVE SERIES VARIABLE SPEED DC MOTOR CONTROL IN A NEMA 1 ENCLOSURE

Horsepower Ranges:

120VAC: 1/8–1/2
240VAC: 1/4–1

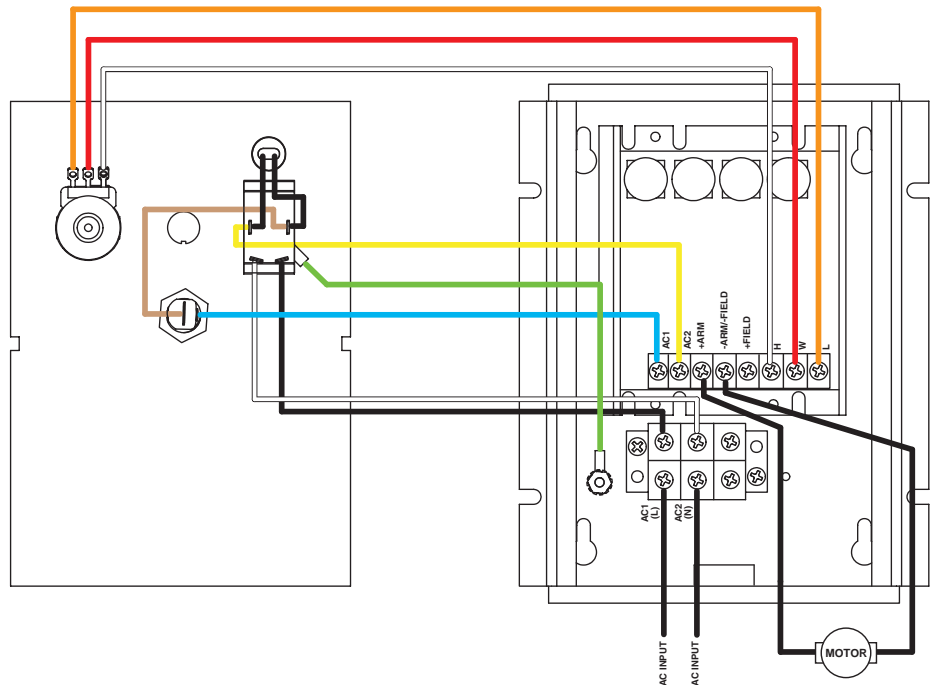
Available Options:

Option Description	Suffix
Independently adjustable linear Accel and Decel (0.5 - 8.0 seconds)	-2A
4-20 mA Isolated Signal Follower with Auto/Manual switch	-7
Fwd-Off-Rev manual switch (center blocked, no dynamic brake)	-29

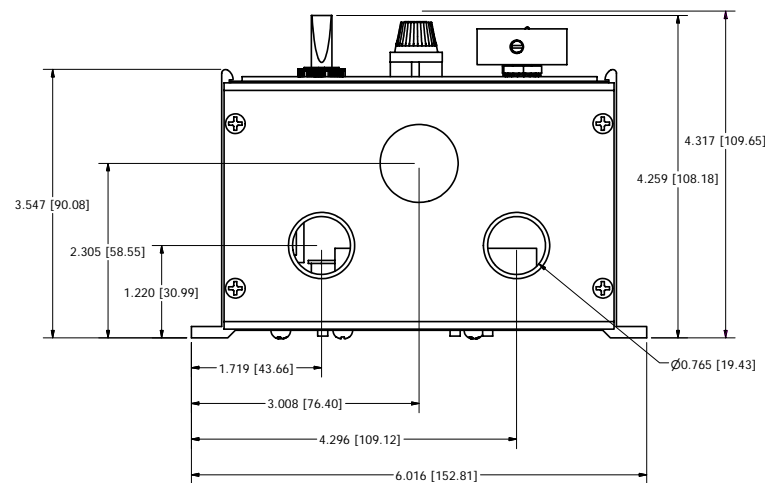
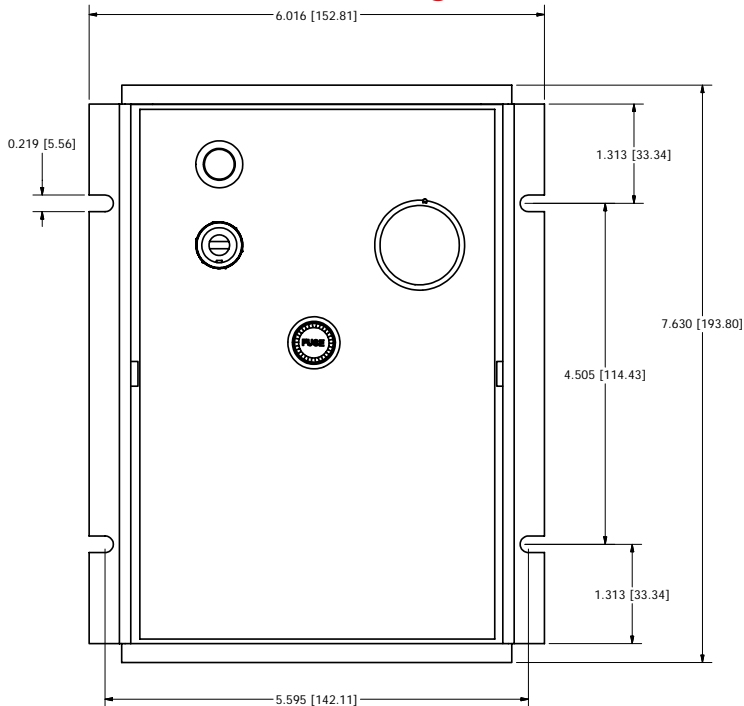
125DVE NEMA 1 Model Numbers and Ratings:

Model	Description	HP Range	Input	Output
125DVE	125DV-C in	1/8–1/2 HP	120 VAC	0–90 VDC
	NEMA 1 Box	1/4–1.0 HP	240 VAC	0–180 VDC

Wiring Diagram:



Dimensional Drawings:



Dart Controls, Inc.

5000 West 106th Street, Zionsville, Indiana 46077 USA
317-873-5211 • Fax: 317-873-1105 • Email: sales@dartcontrols.com